
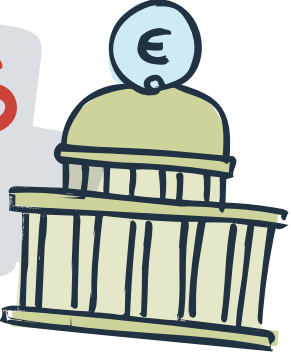


Innovation funding **excludes** citizens



Citizens are more than test subjects



Partners know that "impact" means something different for each of them!



Who represents Non-Human stakeholders here?



A living lab supports partners to speak each other's "language"



Trust before experiment

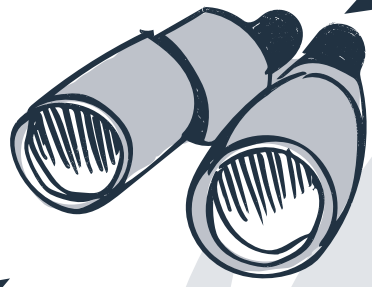


A top-down approach is not co-creation



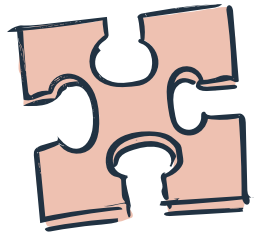
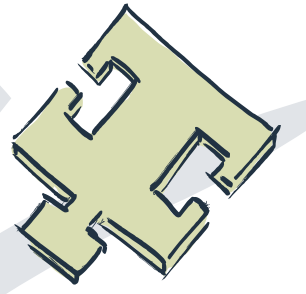
We know each others worldviews





Do we work towards other goals than market viability?

Scientific goals and business goals do not match



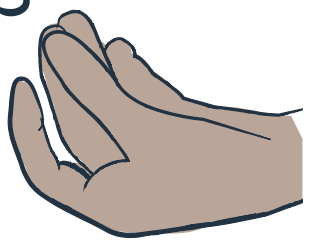
All stakeholders of the living lab 'build a future together'



Dividing tasks is not co-creation



'Given' roles' are not the same as 'taken' roles

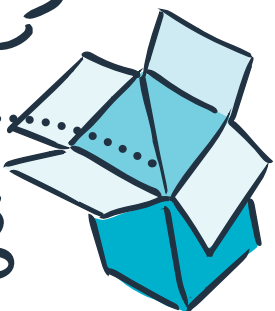


Who is facilitating co-creation throughout

the project?



Less talking more experimenting



Sometimes it is better if the decision power is not transparent



Building  
consensus is not  
co-creation

A living lab  
provides  
a service to  
innovators

Professional  
and personal roles  
always intertwine in a  
living lab

We practice  
our  
values!

A living lab  
is a  
democracy

No  
experimentation,  
no living lab

Transition is as quick as  
the people's willingness  
to change their ways of  
thinking and working

A living lab  
does not rely on a  
single source  
of  
resources



Without a **physical location** there is no **living lab**



A living lab has an **independent** lab coordinator



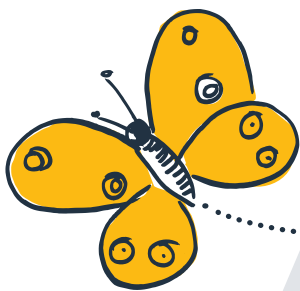
Fostering transition is like playing **chess** on **multiple boards**



What is this **living lab** about?



**Valuable** transitions can only be **recognized** in **hindsight**



Work with **potential** instead of **problems**

